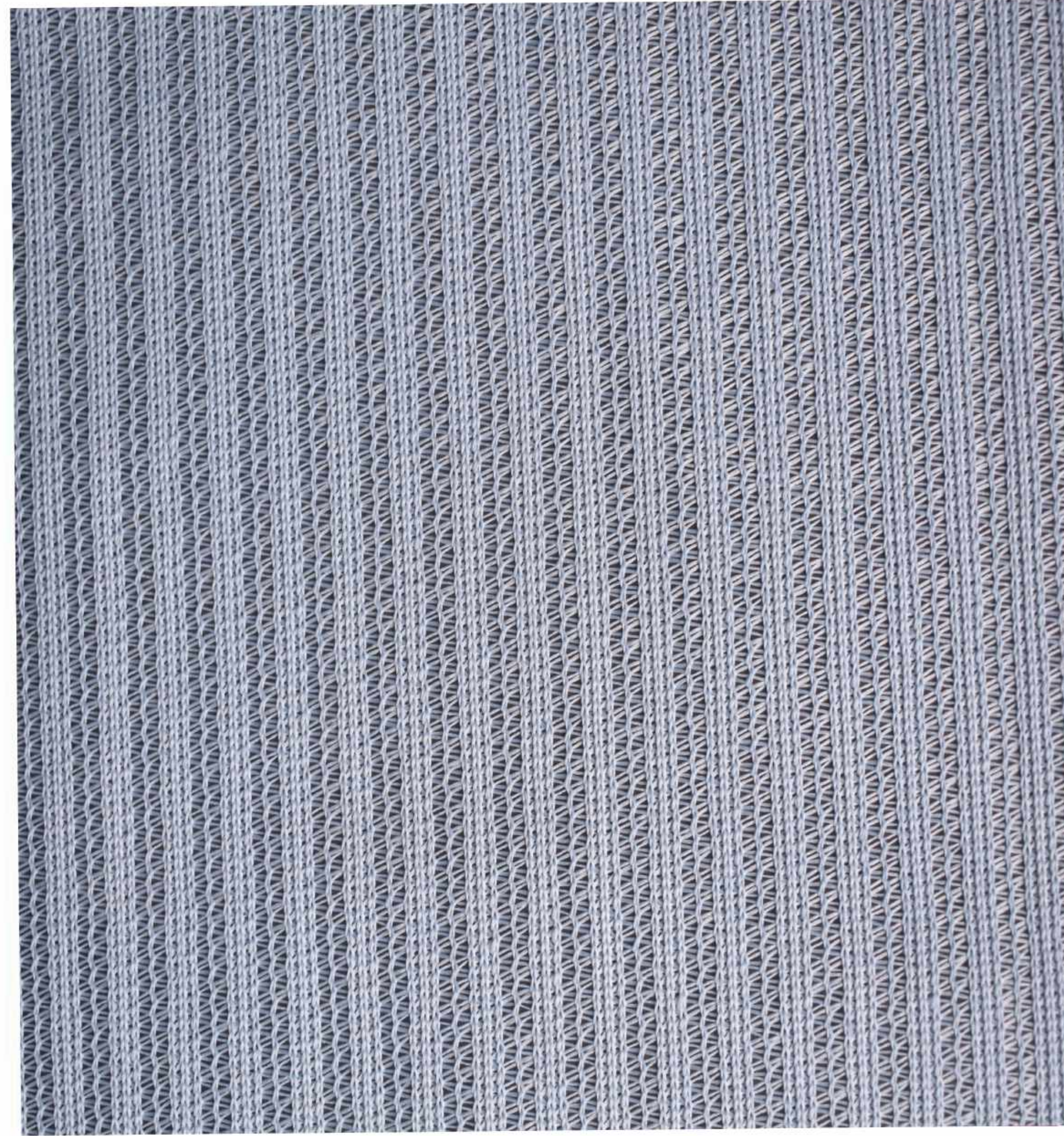




**Nexgen**  
Fabrics

## PLEXUS



## TECHNICAL SPECIFICATIONS

<b>SKU - CODE</b>	<b>PLS - 05 BLUE GREY</b>
<b>Composition</b>	100% Polyester
<b>Width</b>	54" +2%
<b>Weight</b>	290 Grams / Meter +5%
<b>Abrasion Resistance</b>	60,000 Cycles
<b>Color Fastness</b>	Wet:4 , Dry: 5
<b>Color Matching</b>	Batch to batch variations in shade may occur within commercial tolerances.
<b>Anti- Microbial / Anti-Fungal</b>	AATCC 147
<b>Flammability</b>	Available on request.
<b>Suitable For</b>	Vertical Paneling & Seating
<b>Cleaning</b>	Vacuum regularly, Wipe clean using a damp cloth. Shampoo using proprietary Upholestry Shampoo.



[www.nexgenfabrics.com](http://www.nexgenfabrics.com)



[info@nexgenfabrics.com](mailto:info@nexgenfabrics.com)



**C-26, Sector 13, Vasundhara, Ghaziabad, Uttar Pradesh - 201012, India**